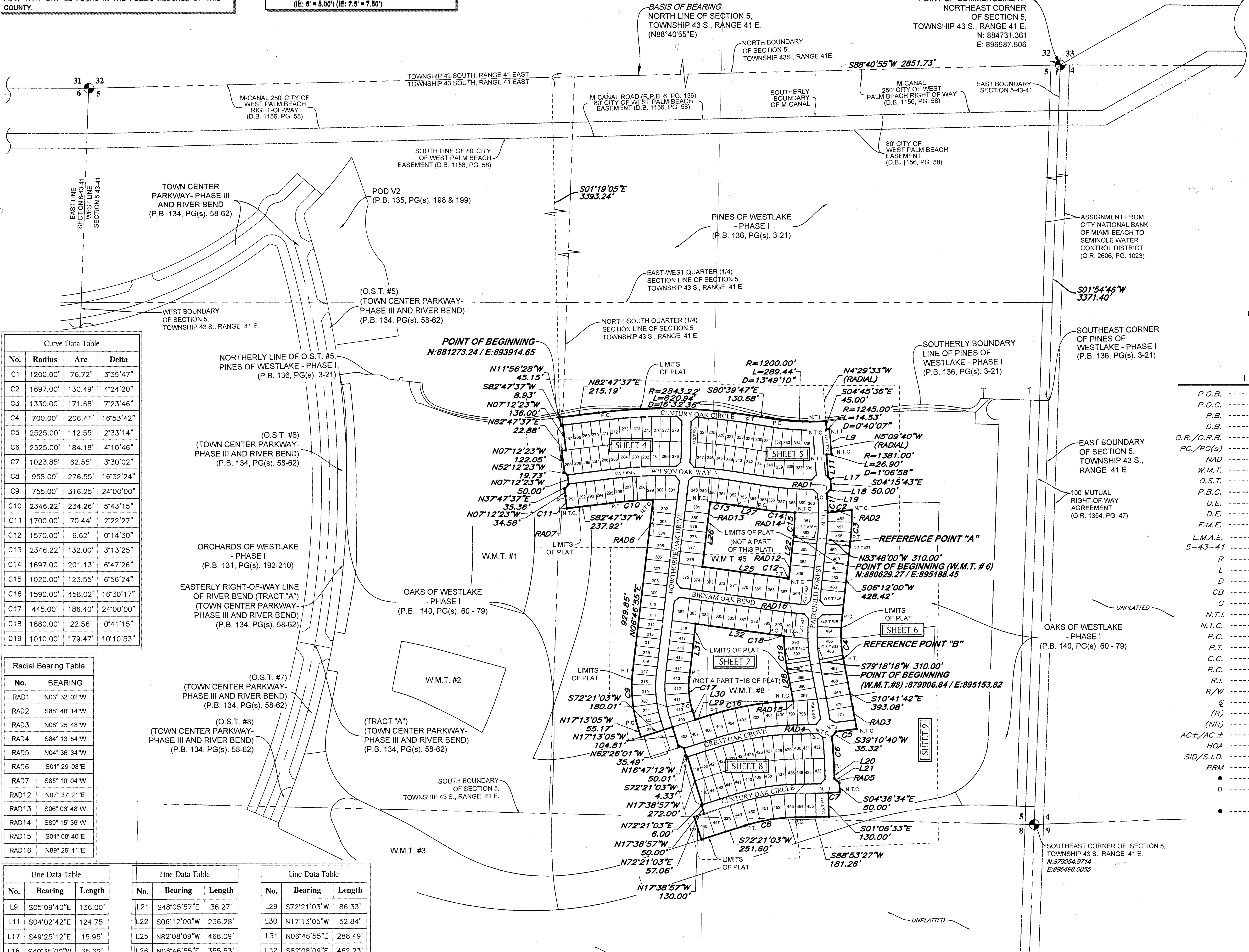
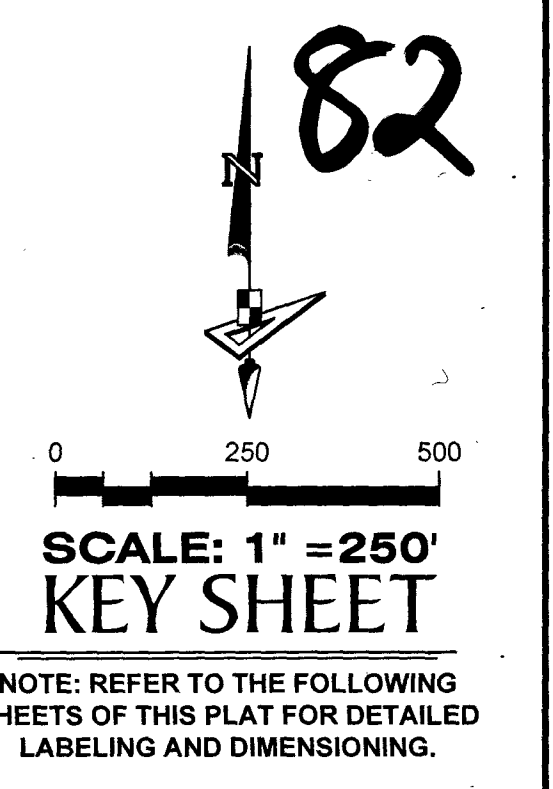


NOTICE:
THIS PLAT, AS RECORDED IN ITS GRAPHIC FORM, IS THE OFFICIAL DEPICTION OF THE SUBDIVIDED LANDS DESCRIBED HEREIN AND WILL IN NO CIRCUMSTANCES BE SUPPLANTED IN AUTHORITY BY ANY OTHER GRAPHIC OR DIGITAL FORM OF THE PLAT. THERE MAY BE ADDITIONAL RESTRICTIONS THAT ARE NOT RECORDED ON THIS PLAT THAT MAY BE FOUND IN THE PUBLIC RECORDS OF THIS COUNTY.

NOTE: EASEMENTS, BUFFERS AND OTHER SUCH LABELS AND DIMENSIONS OF A PARALLEL NATURE AS SHOWN HEREON AND INDICATED TO THE NEAREST FOOT (IE: 5' UTILITY EASEMENT) ARE ASSUMED TO BE THE SAME DIMENSION EXTENDED TO THE NEAREST HUNDRETH OF A FOOT WITH NO GREATER OR LESSER VALUE (IE: 5' = 5.00') (IE: 7.5' = 7.50')

OAKS OF WESTLAKE - PHASE II

A SUBDIVISION IN SECTIONS 5 AND 8, TOWNSHIP 43 SOUTH, RANGE 41 EAST, CITY OF WESTLAKE, PALM BEACH COUNTY, FLORIDA, BEING A REPLAT OF A PORTION OF TRACT "U", OAKS OF WESTLAKE - PHASE I, PLAT BOOK 140, PAGES 60 - 79, INCLUSIVE, PUBLIC RECORDS OF PALM BEACH COUNTY, FLORIDA.



Curve Data Table

No.	Radius	Arc	Delta
C1	1200.00'	76.72'	3°39'47"
C2	1697.00'	130.49'	4°24'20"
C3	1330.00'	171.68'	7°23'46"
C4	700.00'	206.41'	16°53'42"
C5	2525.00'	112.55'	2°33'14"
C6	2525.00'	184.18'	4°10'46"
C7	1023.85'	62.55'	3°30'02"
C8	958.00'	276.55'	16°32'24"
C9	755.00'	316.25'	24°00'00"
C10	2346.22'	234.26'	5°43'15"
C11	1700.00'	70.44'	2°22'27"
C12	1570.00'	6.62'	0°14'30"
C13	2346.22'	132.00'	3°13'25"
C14	1697.00'	201.13'	6°47'26"
C15	1020.00'	123.55'	6°56'24"
C16	1590.00'	458.02'	16°30'17"
C17	445.00'	186.40'	24°00'00"
C18	1880.00'	22.56'	0°41'15"
C19	1010.00'	179.47'	10°10'53"

Radial Bearing Table

No.	BEARING
RAD1	N03°32'02"W
RAD2	S88°48'14"W
RAD3	N08°25'48"W
RAD4	S84°13'54"W
RAD5	N04°36'34"W
RAD6	S01°29'08"E
RAD7	S85°10'04"W
RAD12	N07°37'21"E
RAD13	S06°06'48"W
RAD14	S89°15'36"W
RAD15	S01°08'40"E
RAD16	N89°29'11"E

Line Data Table

No.	Bearing	Length
L9	S05°09'40"E	136.00'
L11	S04°02'42"E	124.75'
L17	S49°25'12"E	15.95'
L18	S40°35'00"W	35.32'
L19	S04°21'58"E	28.16'
L20	S01°35'20"E	43.27'

Line Data Table

No.	Bearing	Length
L21	S48°05'57"E	36.27'
L22	S06°12'00"W	236.28'
L25	N82°08'09"W	468.09'
L26	N06°46'55"E	355.53'
L27	S80°39'47"E	130.68'
L28	S10°41'42"E	179.05'

Line Data Table

No.	Bearing	Length
L29	S72°21'03"W	86.33'
L30	N17°13'05"W	52.84'
L31	N06°46'55"E	288.49'
L32	S82°08'09"E	462.23'

COORDINATES SHOWN HEREON ARE FLORIDA STATE PLANE GRID DATUM = NAD83 2007 ADJUSTMENT ZONE = FLORIDA EAST LINEAR UNITS = US SURVEY FEET COORDINATE SYSTEM = 1983 STATE PLANE PROJECTION = TRANSVERSE MERCATOR ALL DISTANCES ARE GROUND SCALE FACTOR: 1.0000 GROUND DISTANCE X SCALE FACTOR = GRID DISTANCE PLAT BEARING = GRID BEARING NO ROTATION ALL TIES TO SECTION CORNERS AND QUARTER CORNERS ARE GENERATED FROM MEASURED VALUES

BASIS OF BEARINGS
BEARINGS SHOWN HEREON ARE BASED ON THE NORTH BOUNDARY OF SECTION 5, TOWNSHIP 43 SOUTH, RANGE 41 EAST, HAVING A GRID BEARING OF N 88°40'55"E. (MEASURED). BEARINGS SHOWN HEREON, REFER TO THE STATE PLANE COORDINATE SYSTEM, NORTH AMERICA DATUM OF 1983 (NAD 83 - '07) FOR THE EAST ZONE OF FLORIDA. SAID BASIS OF BEARING IS THE SAME IN THE NORTH AMERICAN DATUM OF 1983 (NAD 83 - '90).

- LEGEND**
- P.O.B. ----- POINT OF BEGINNING
 - P.O.C. ----- POINT OF COMMENCEMENT
 - P.B. ----- PLAT BOOK
 - D.B. ----- DEED BOOK
 - O.R./O.R.B. ----- OFFICIAL RECORDS BOOK
 - PG./PG(S) ----- PAGE(S)
 - NAD ----- NORTH AMERICAN DATUM
 - W.M.T. ----- WATER MANAGEMENT TRACT
 - O.S.T. ----- OPEN SPACE TRACT
 - P.B.C. ----- PALM BEACH COUNTY
 - U.E. ----- UTILITY EASEMENT
 - D.E. ----- DRAINAGE EASEMENT
 - F.M.E. ----- FORCE MAIN EASEMENT
 - L.M.A.E. ----- LAKE MAINTENANCE ACCESS EASEMENT
 - 5-43-41 ----- SECTION-TOWNSHIP-RANGE
 - R ----- RADIUS
 - L ----- ARC LENGTH
 - D ----- DELTA ANGLE
 - CB ----- CHORD BEARING
 - C ----- CHORD
 - N.T.I. ----- NON-TANGENT INTERSECTION
 - N.T.C. ----- NON-TANGENT CURVATURE
 - P.C. ----- POINT OF CURVATURE
 - P.T. ----- POINT OF TANGENCY
 - C.C. ----- COMPOUND CURVATURE
 - R.C. ----- REVERSE CURVATURE
 - R.I. ----- RADIAL INTERSECTION
 - R/W ----- RIGHT-OF-WAY
 - CL ----- CENTERLINE OF ROAD
 - (R) ----- RADIAL
 - (NR) ----- NON-RADIAL
 - AC±/AC.± ----- ACRES
 - HOA ----- HOMEOWNERS ASSOCIATION
 - SID/S.I.D. ----- SEMINOLE IMPROVEMENT DISTRICT
 - PRM ----- PERMANENT REFERENCE MONUMENT
 - ----- PERMANENT CONTROL POINT
 - ----- FOUND PERMANENT REFERENCE MONUMENT "PRM LB 7768"
 - ----- SET 1/2" IRON ROD WITH PRM CAP STAMPED "PRM LB 7768"